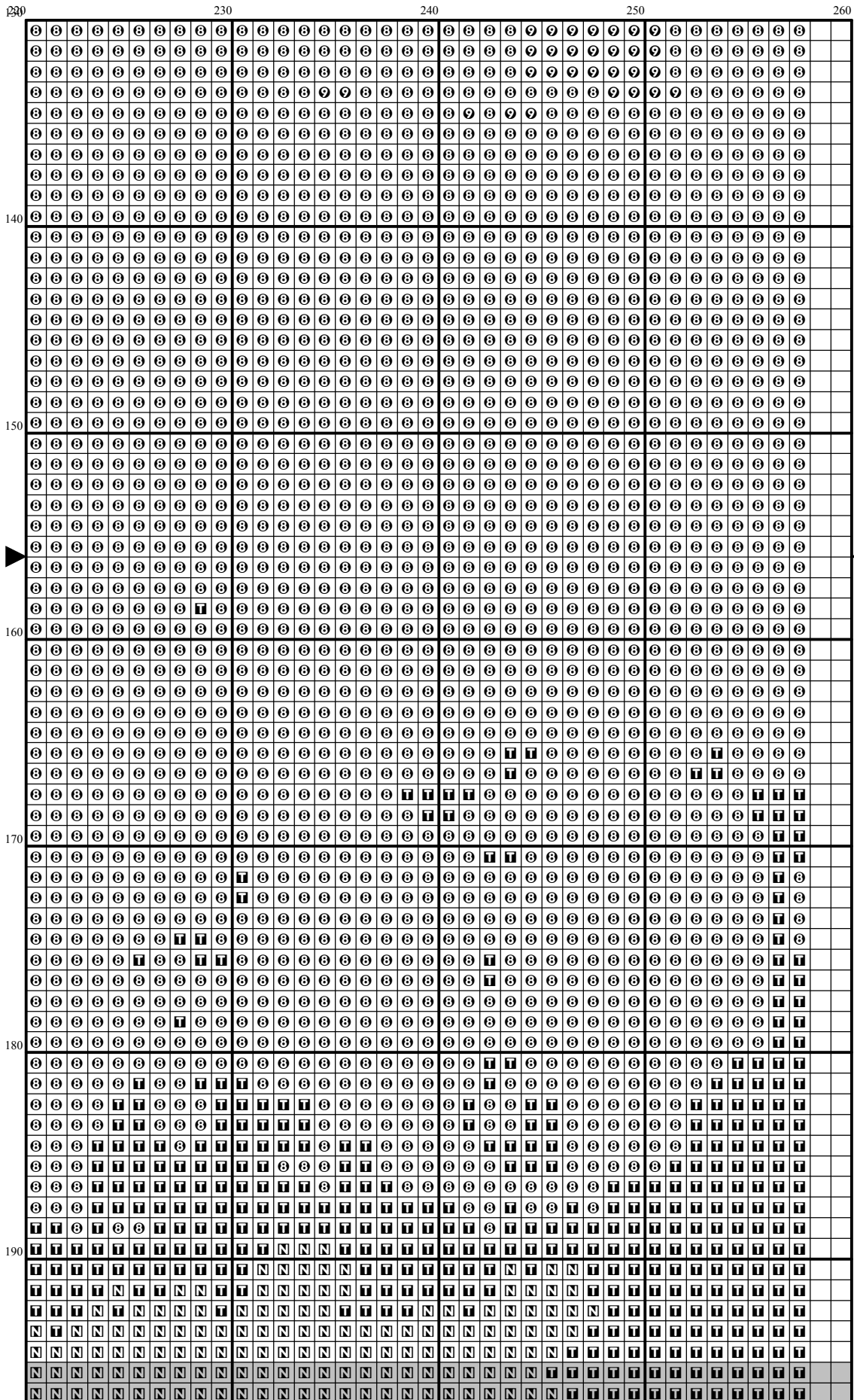
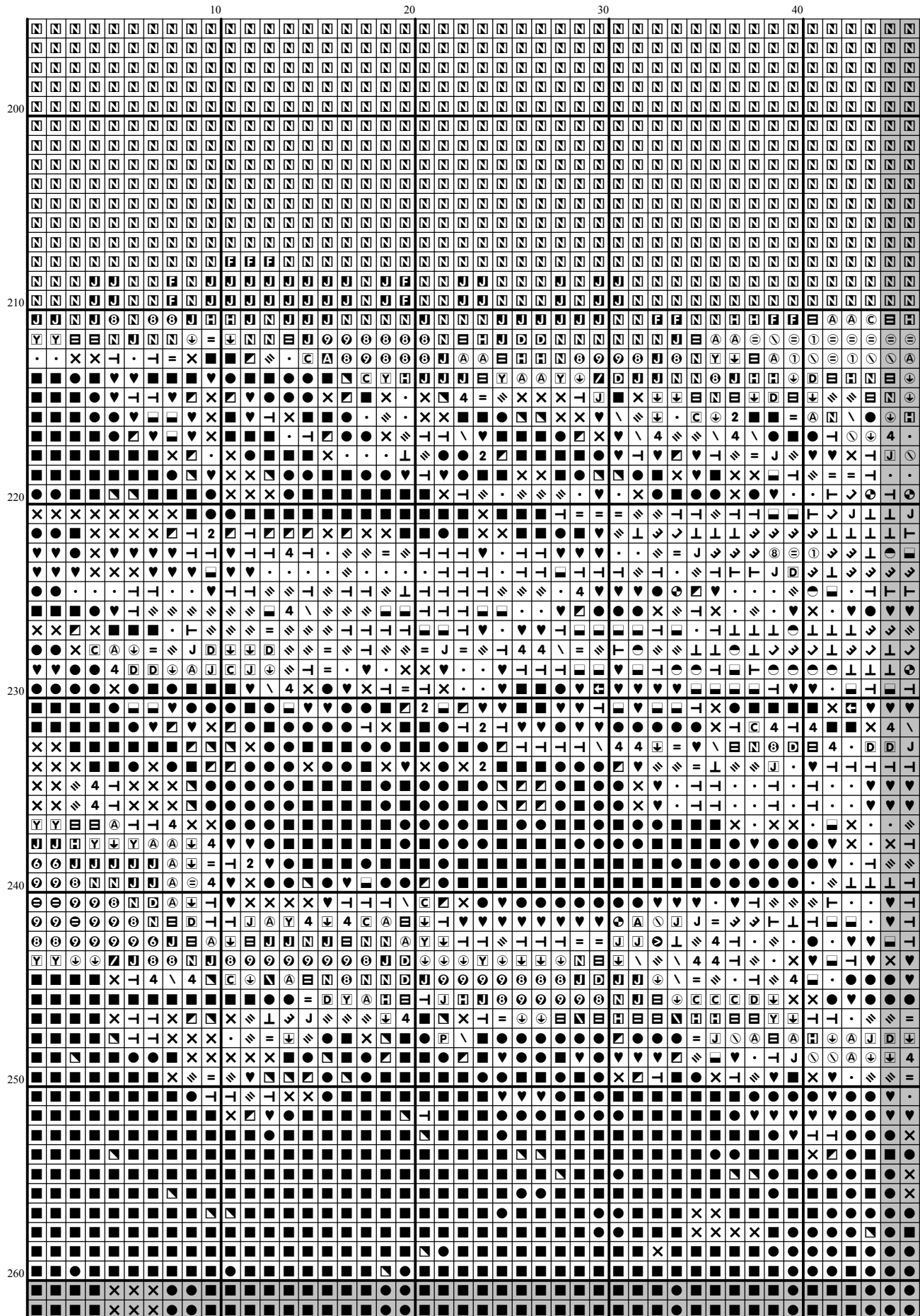
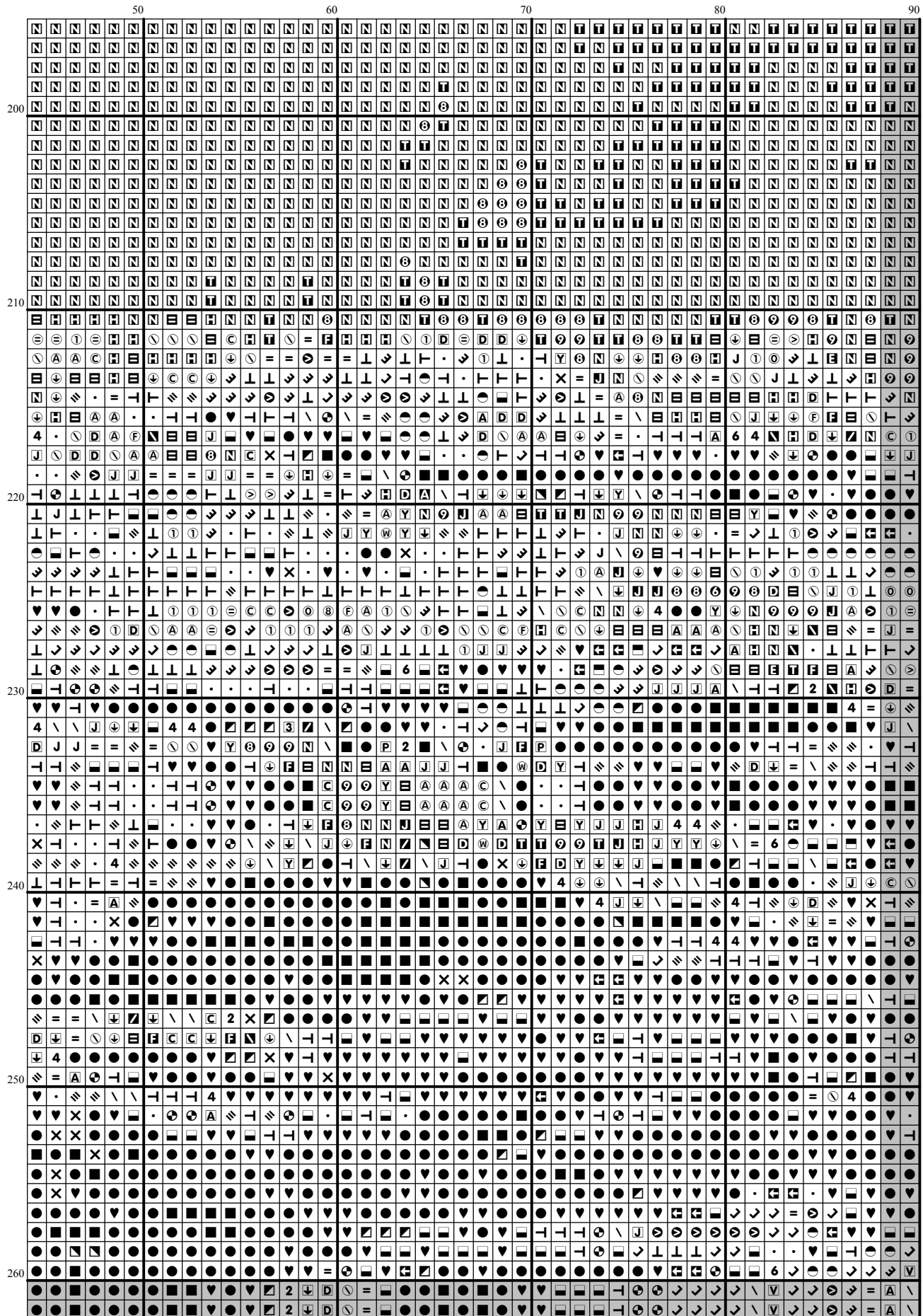


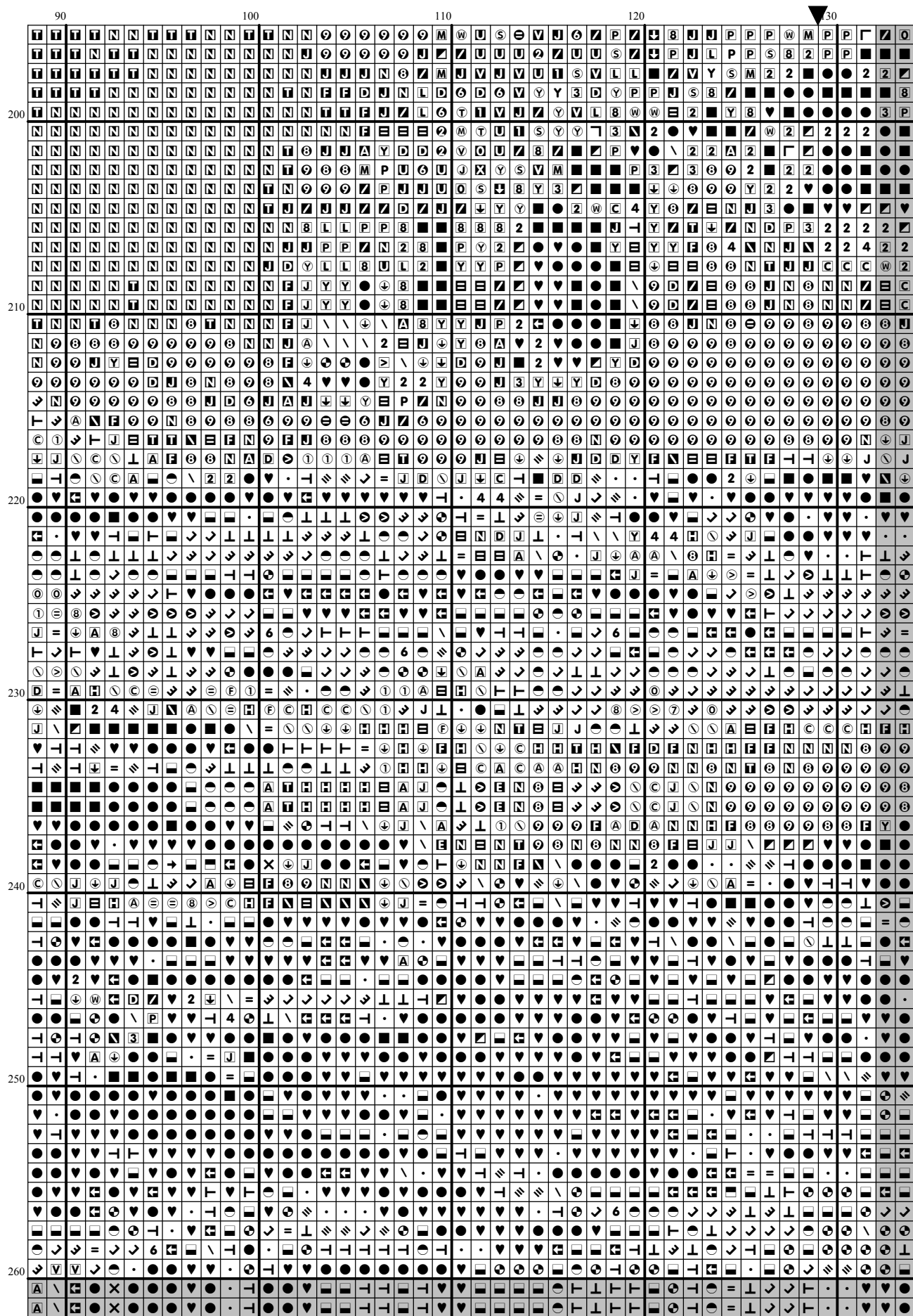
[illegible]

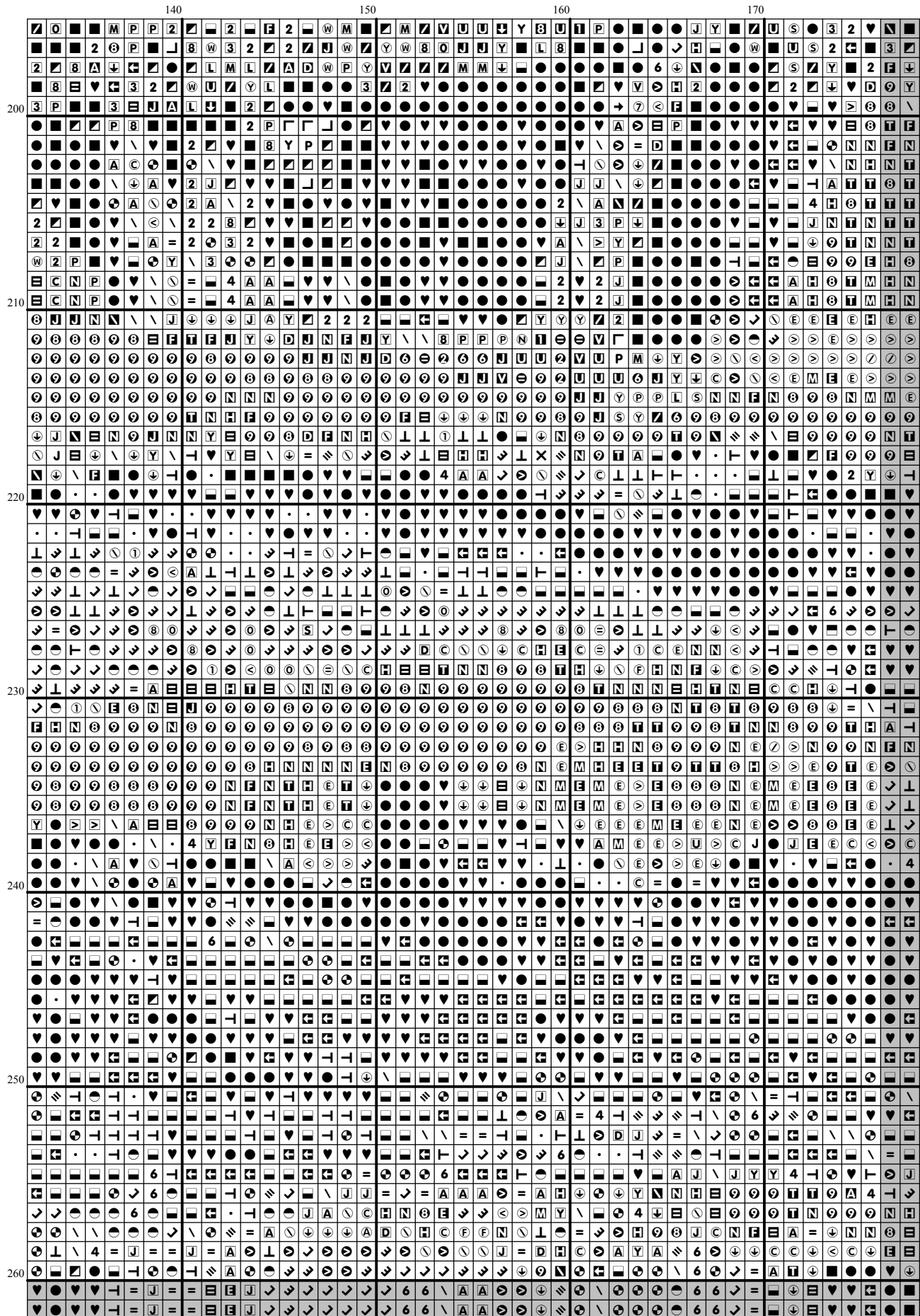
[illegible]

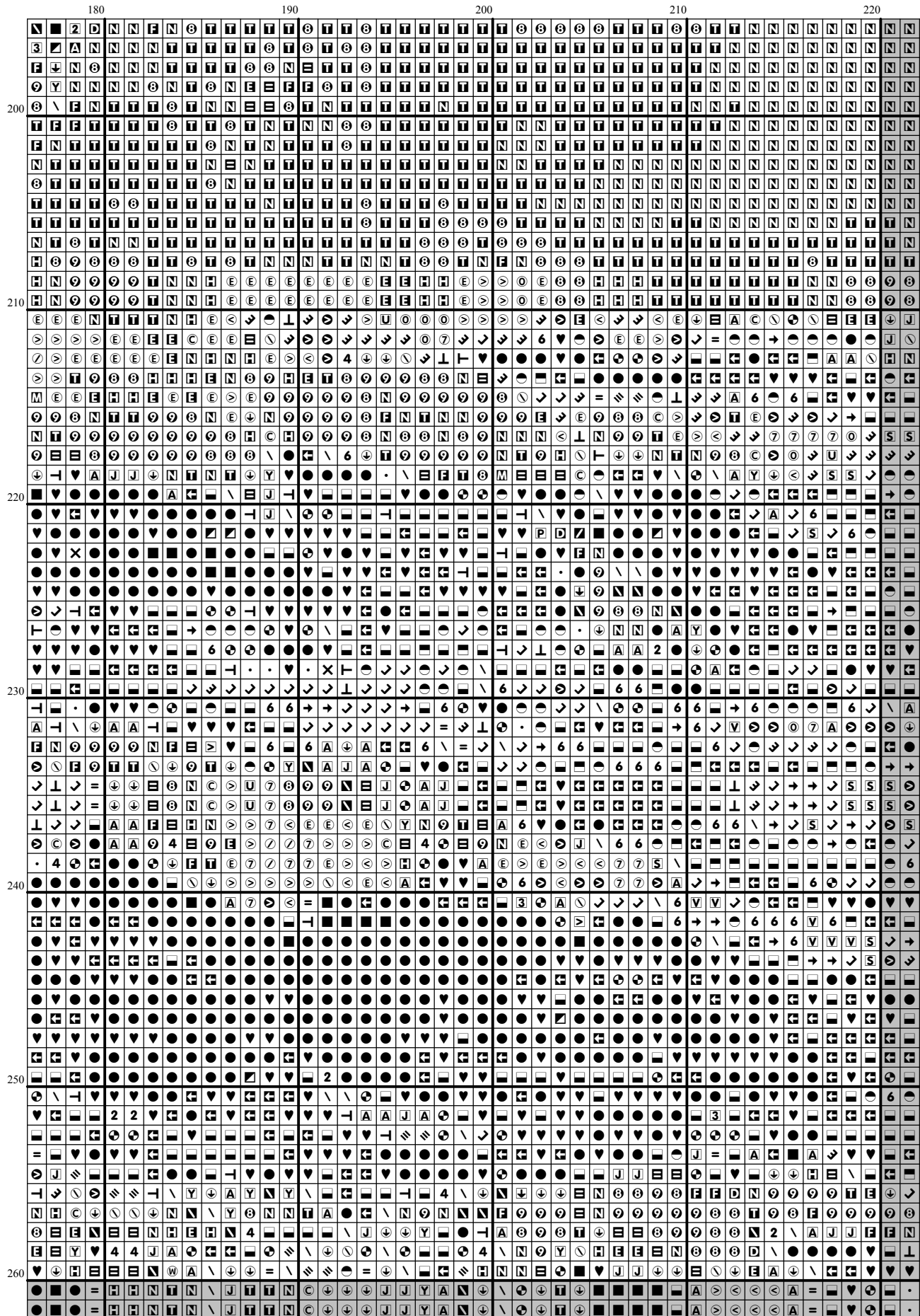


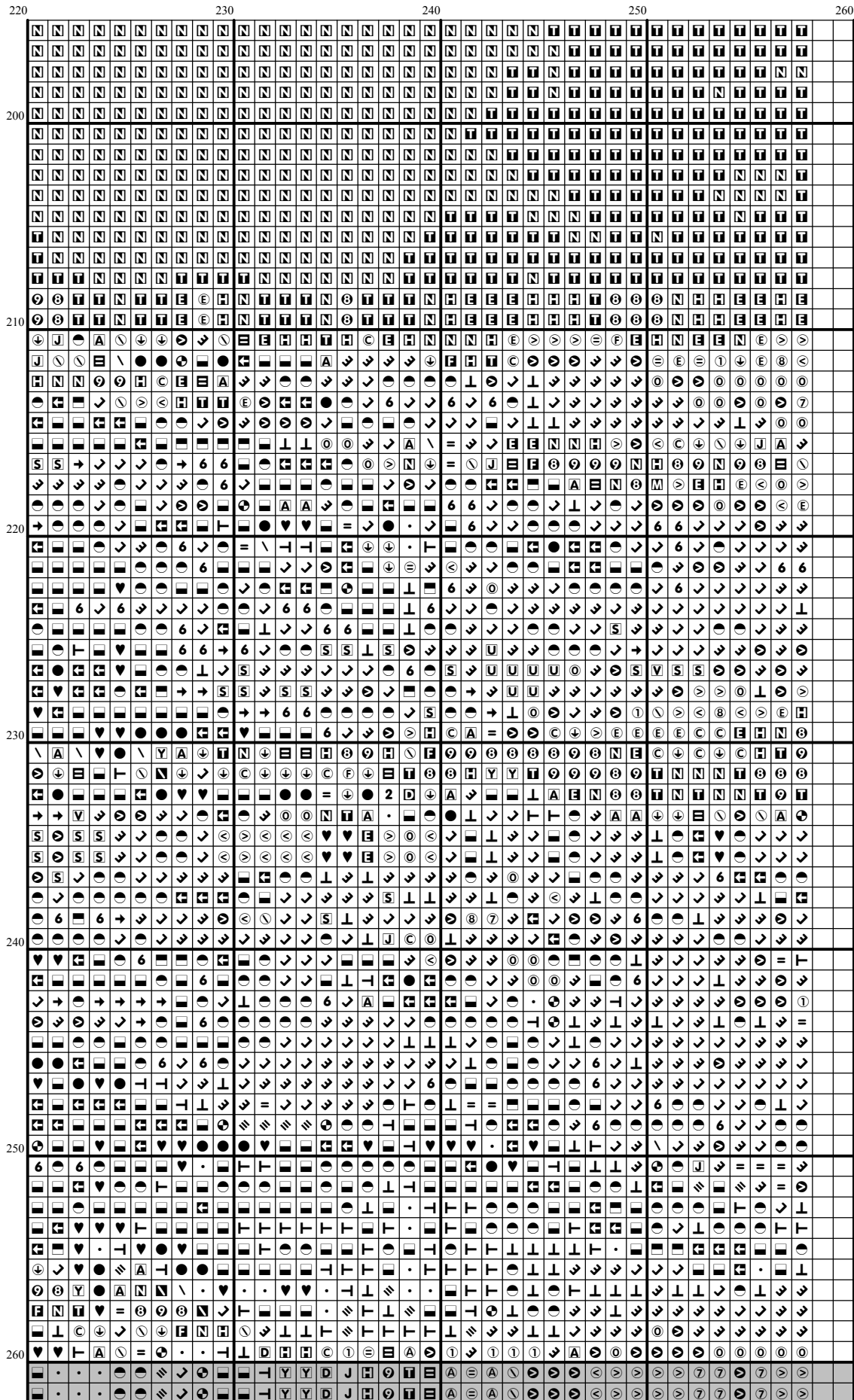


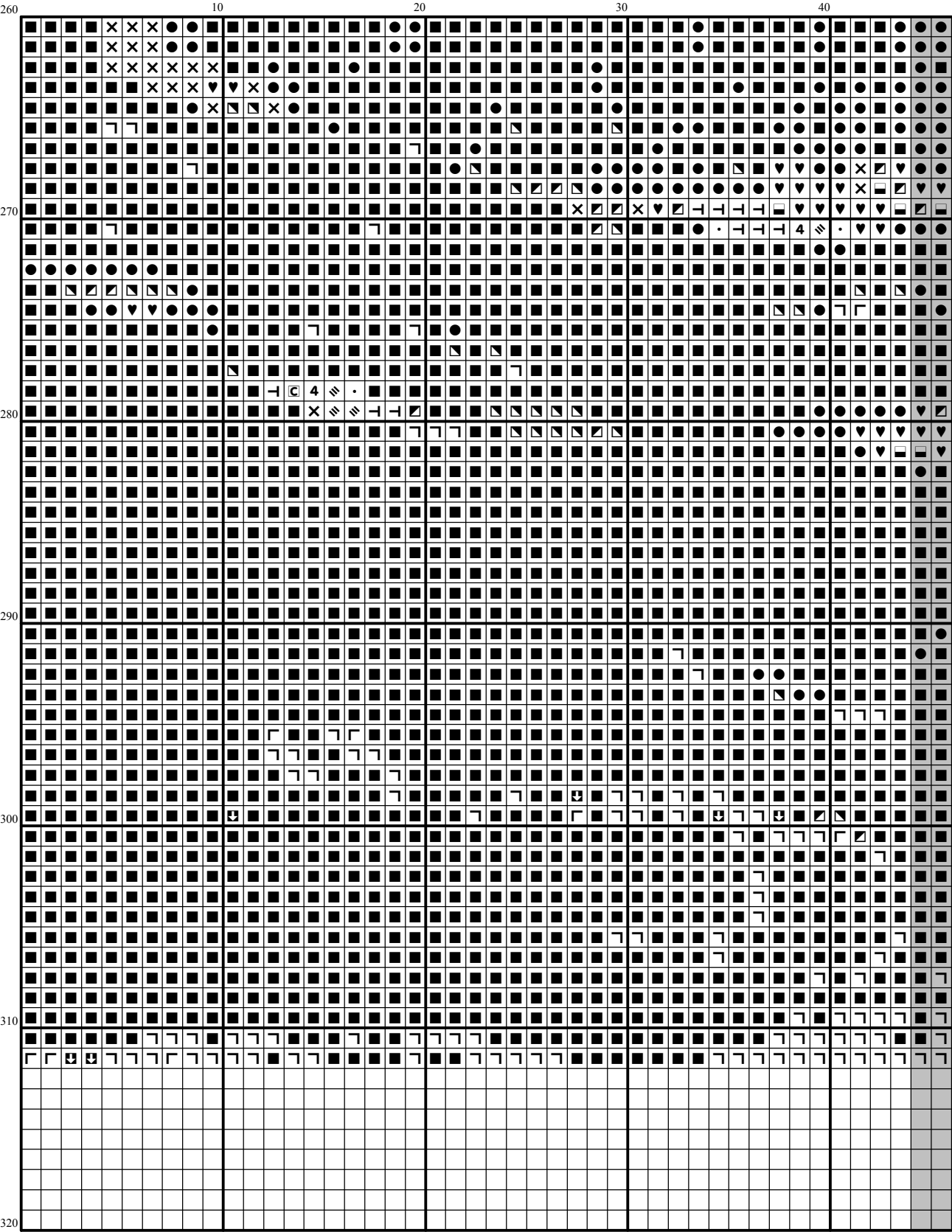


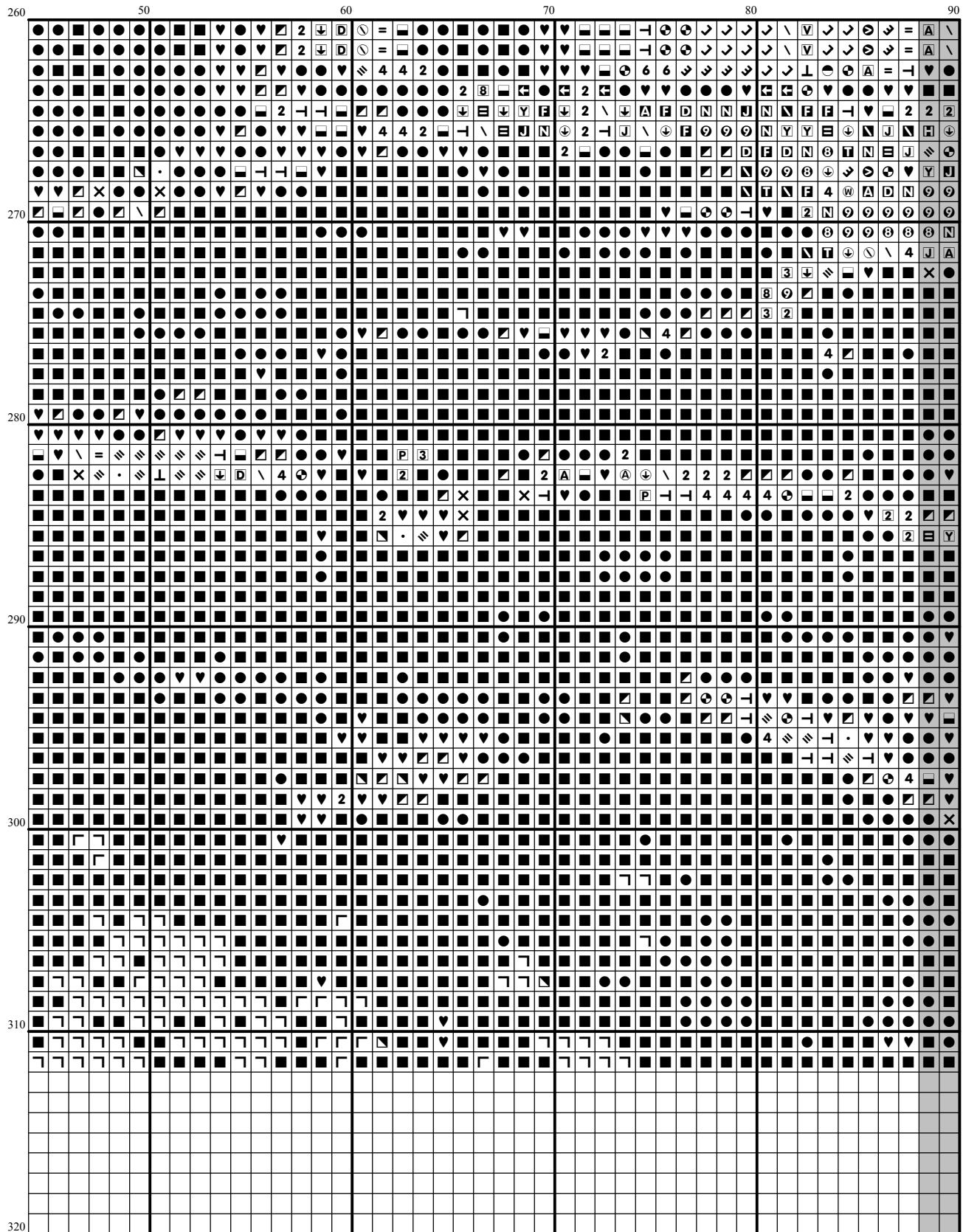


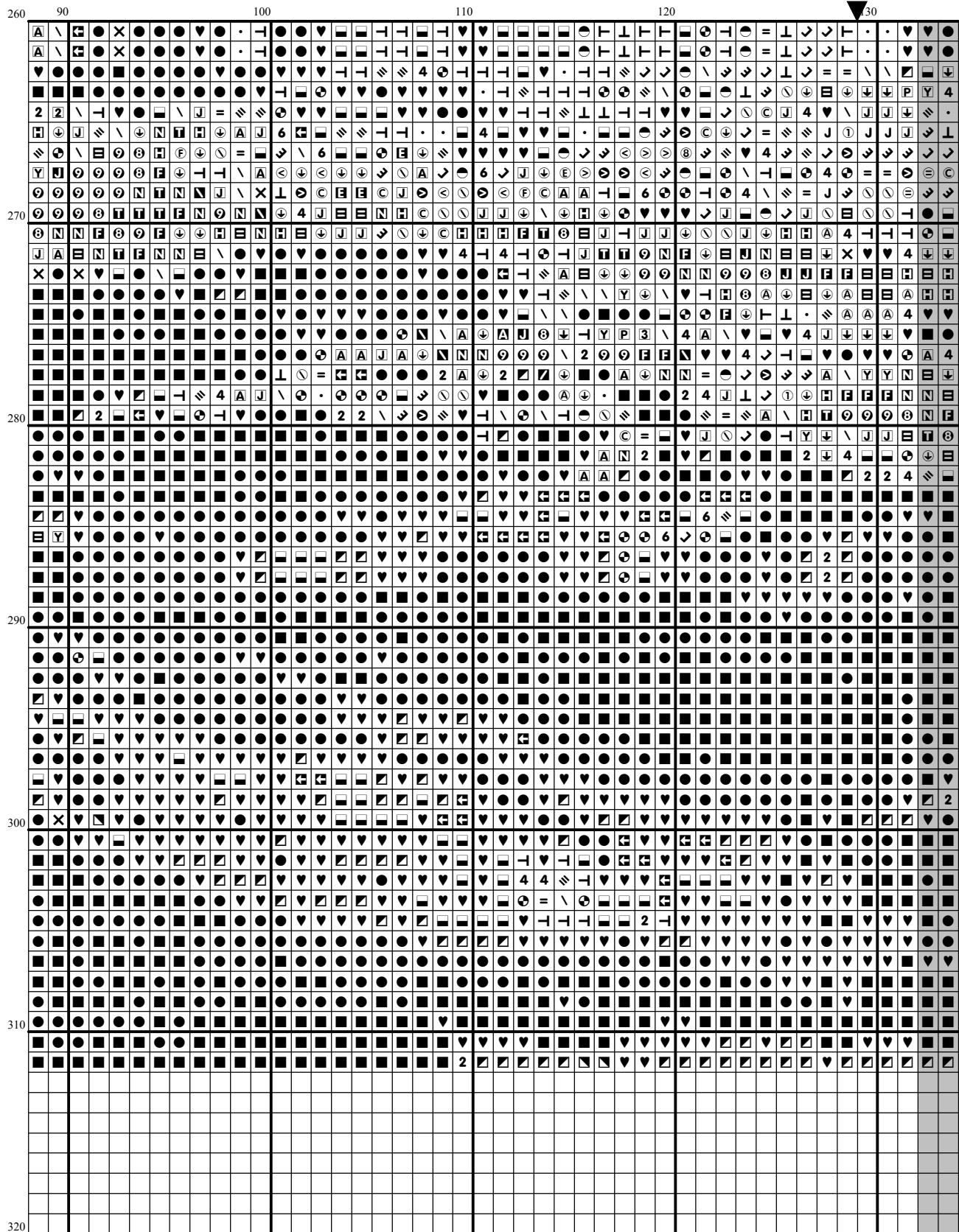


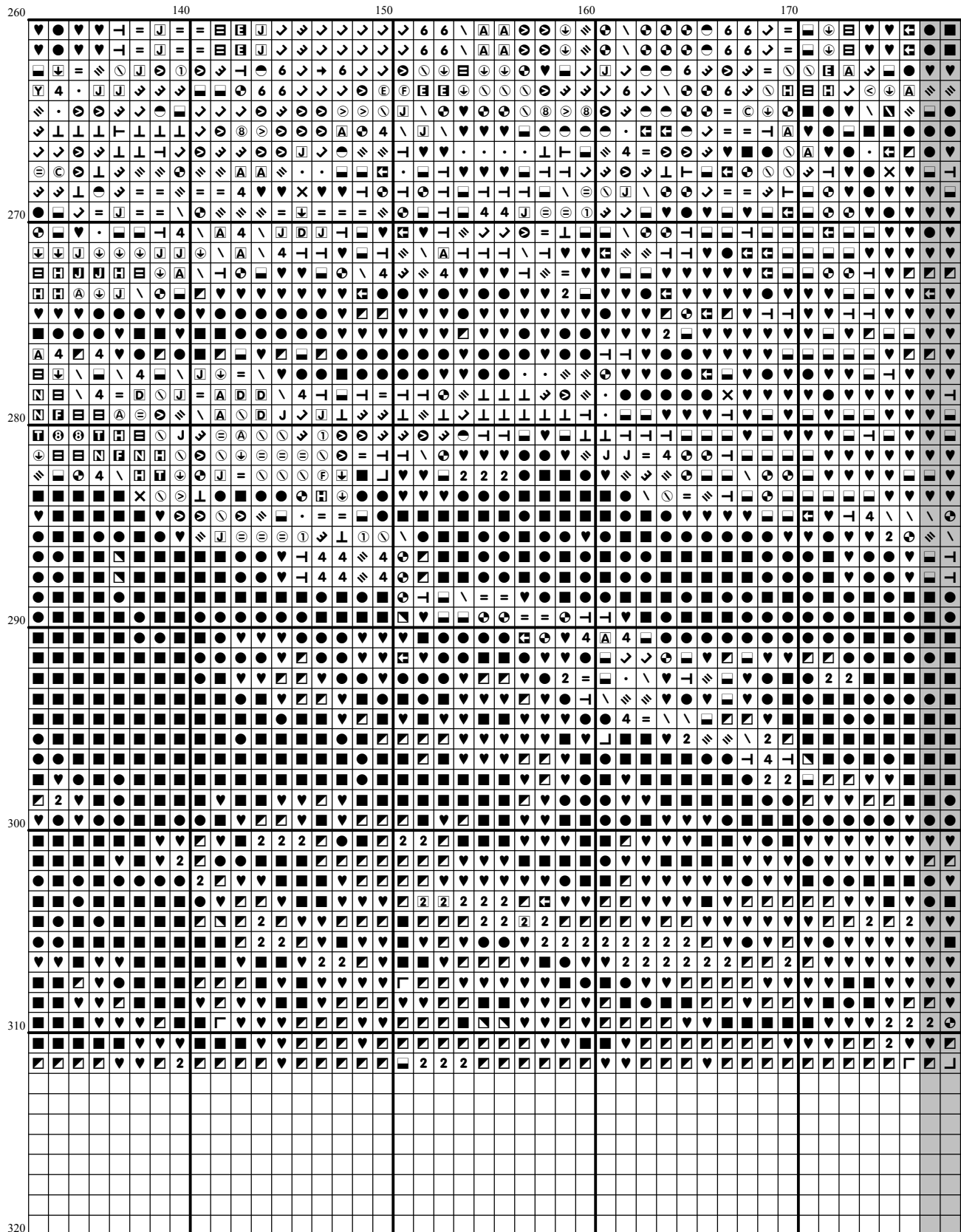


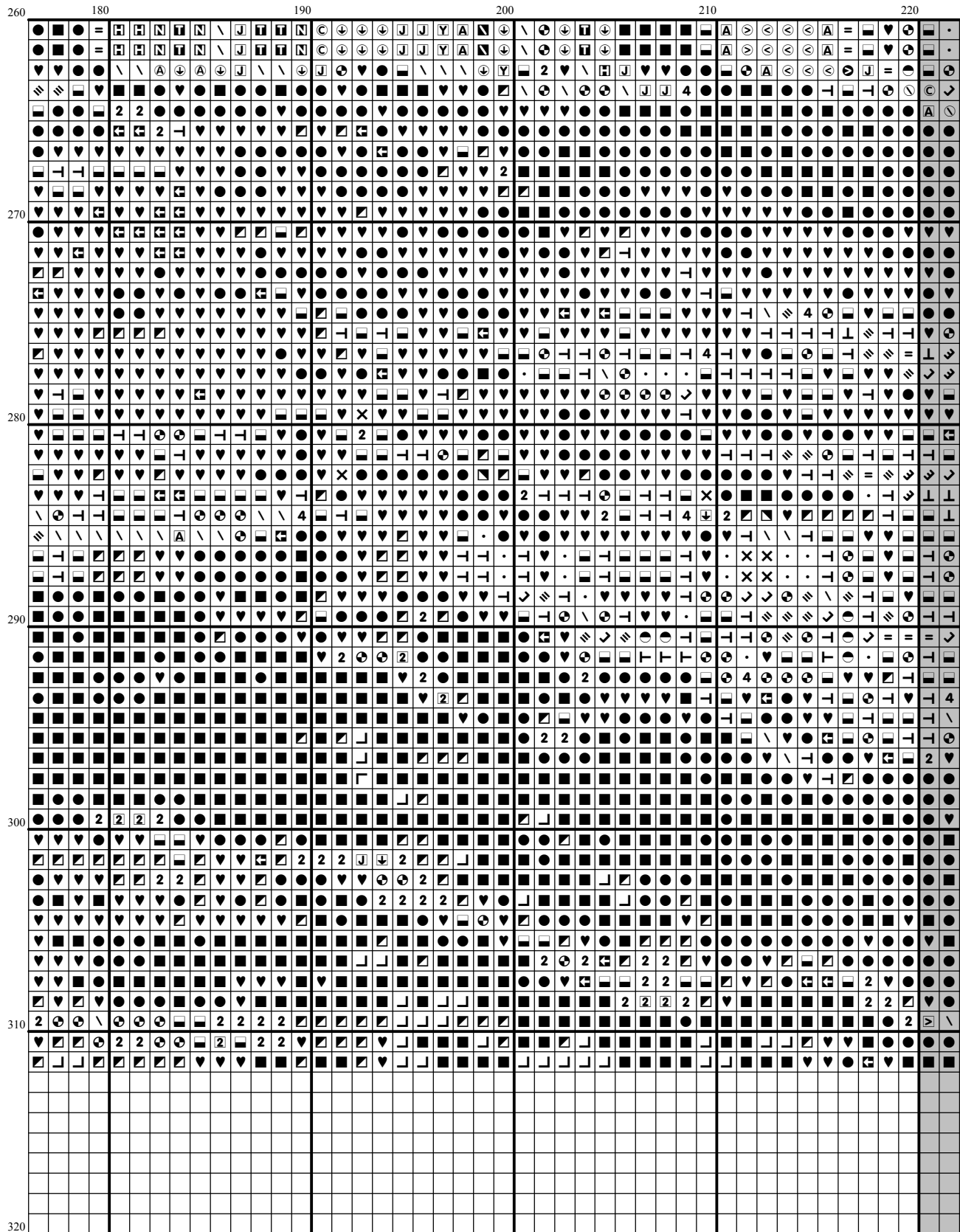


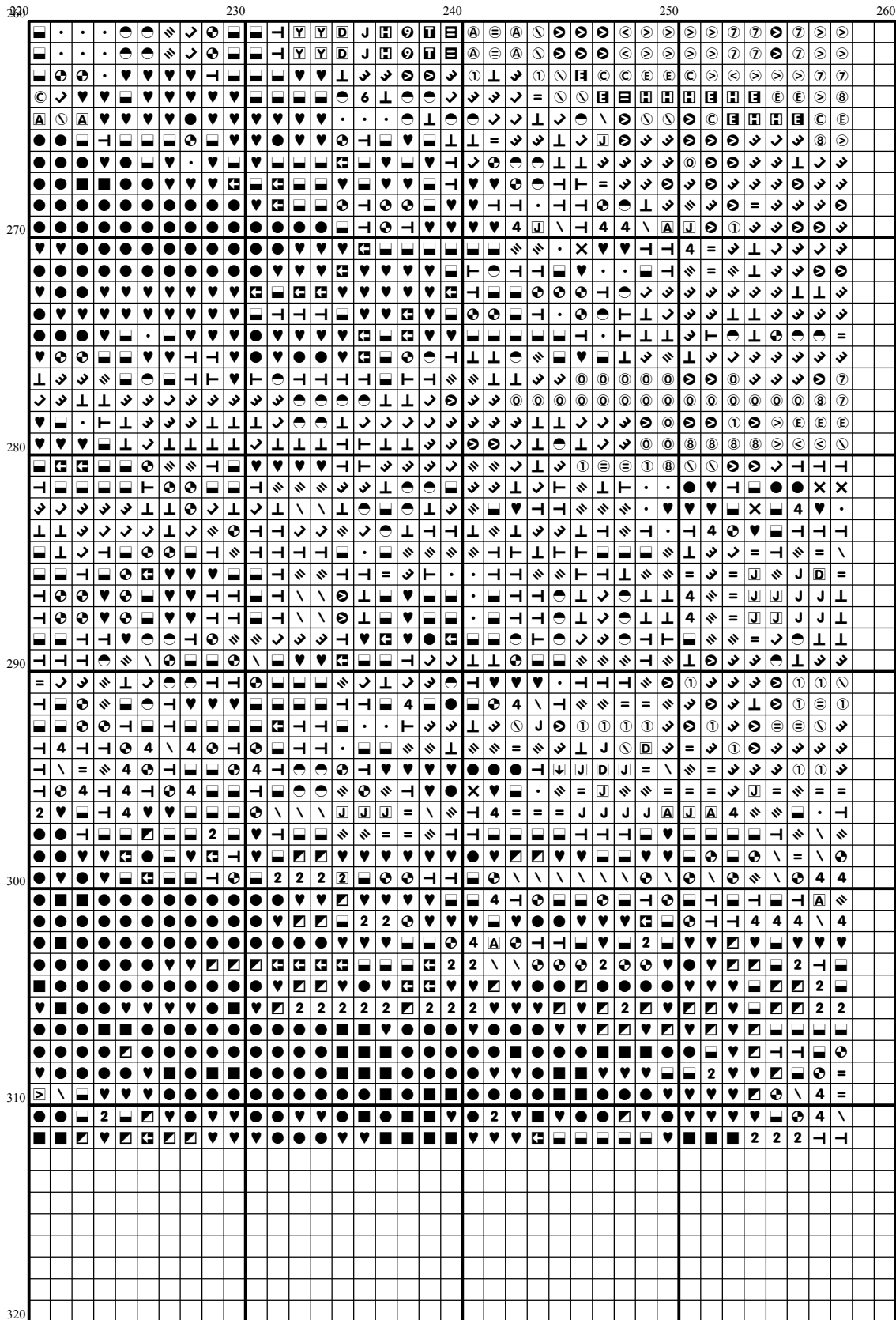












Instructions and Symbol Key for Design "NA 108 USS Constitution"

Fabric: 14 count white Aida

Stitches: 258 x 312 **Size:** 18.43 x 22.29 inches or 46.81 x 56.61 cm


Colours: DMC

Use **2** strands of thread for cross stitch

Sym	No.	Colour Name	Sym	No.	Colour Name
	154	Prune rose		161	Ash blue
	163	Eucalyptus green		165	Pale moss green
	168	Mouse grey		169	Pewter grey
	310	Black		311	Dark polar blue
	312	Night blue		317	Steel grey
	319	Shadow green		336	Indigo blue
	370	Medium mustard		400	Brown
	413	Iron grey		415	Chrome grey
	422	Light oak		437	Camel
	451	Shell pink grey		453	Turtledove grey
	500	Ivy green		501	Pond green
	502	Blue green		517	Dark wedgewood blue
	519	Sea spray blue		535	Stone grey
	561	Cypress tree green		562	Malachite green
	597	Iceland blue		598	Lagoon turquoise
	612	String brown		642	Earth grey
	644	Light green grey		645	Dark steel grey
	646	Platinum grey		647	Rock grey
	648	Pepper grey		676	Savannah gold
	677	Sand gold		680	Dark old gold
	712	Cream		738	Sahara cream
	747	Sea mist blue		775	Summer rain blue
	780	Chestnut tree brown		801	Mink brown
	807	Pond blue		822	Cotton cream
	823	Blueberry blue		825	Sea blue
	832	Light green bronze		840	Hare brown
	841	Deer brown		890	Deep forest green
	924	Dark pearl green		926	Grey green
	927	Oyster grey		928	Light pearl grey
	930	Slate grey		931	Blue grey
	932	Seagull blue		934	Algae green
	938	Espresso brown		939	Dark navy blue
	950	Beige		959	Medium seagreen
	964	Light sea green		976	Nutmeg brown
	991	Dark aquamarine		992	Deep water green
		green			
	993	Light green		3021	Cliff grey
	3023	Light platinum grey		3041	Medium lilac
	3042	Lilac		3047	Silver birch beige
	3072	Pale pearl grey		3078	Pale yellow
	3325	Azur blue		3371	Ebony
	3750	Deep petrol blue		3756	Cloud blue
	3761	Light Sky Blue		3766	Light medium blue
	3768	Storm grey		3782	Gingerbread brown
	3787	Wolf grey		3790	Cappuccino brown
	3799	Anthracite grey		3802	Aubergine mauve
	3808	Petrol blue		3809	Deep turquoise
	3810	Dark turquoise		3811	Waterfall blue

⓪	3812	Deep seagreen	Ⓔ	3813	Light green
=	3815	Eucalyptus Green	Ⓛ	3816	Snake green
Ⓐ	3817	Polar tree green	➔	3842	Deep Wedgewood blue
Ⓤ	3844	Electric blue	Ⓢ	3845	Turquoise
Ⓣ	3847	Deep teal green	↘	3848	Medium teal green
Ⓝ	3849	Green turquoise	Ⓢ	3865	Winter white
⓪	ECRUT	ECRUT			

Use 1 strands of thread for backstitch

	DMC 648	Peppergrey
	DMC 924	Dark pearl green

This chart has been designed and printed with our best intentions of being without mistakes. However, the possibility of human error, printing mistakes or the variation of individual stitching does exist, and we regret that we cannot be responsible for this.

Note: The shaded blocks on the chart represent overlapping stitches.
Copyright © Classic Cross Stitch 2005 All rights reserved.